

## TeemU Finance – Emu Market Update (EMU)

With our EMU we look to share relevant market data and information in one place. Saving you time as we do the sourcing for you. We hope you find this of interest.

### Current Economic Indicators:

RBA cash interest rate target	3.60% (-0.25% change)
CPI (inflation) index movement in 12 months to June 2025	1.90% (2.1% 12 months to May)
Next RBA interest rate decision	30 <sup>th</sup> Sept 2025

Graph of the Cash Rate Target



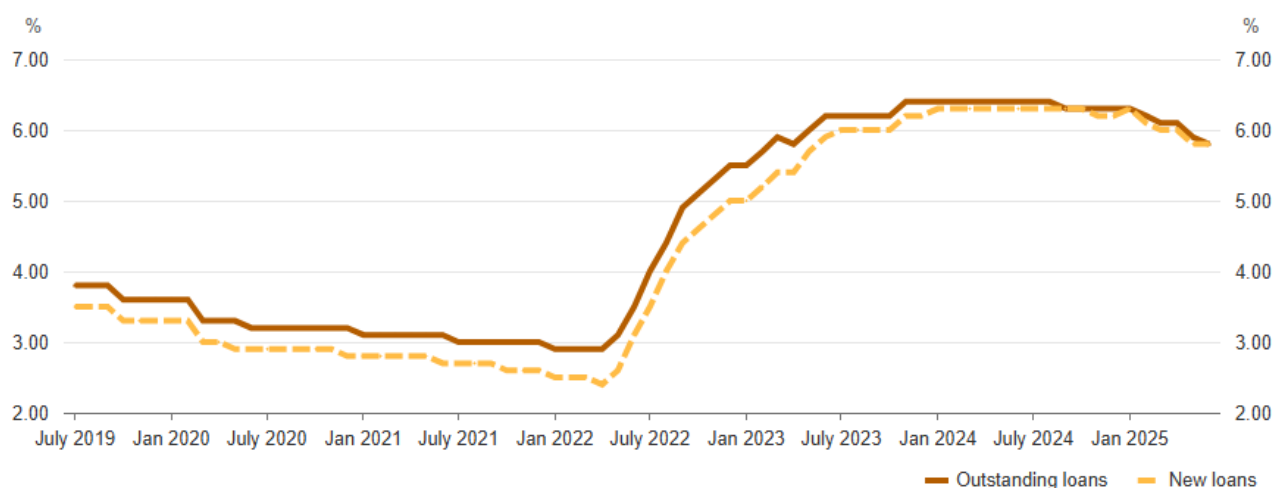
Source: RBA

### Lenders Interest Rate Trends:

#### Housing Rates

##### Owner-occupier Variable Housing Rates

Outstanding and new loans; in % per annum



Sources: APRA; RBA

**Sources:** apra; rba.gov.au; abs.gov.au; SQM Research, Core Logic

**Disclaimer:** The information provide herein is for informational purposes only. It is not intended as professional financial, legal, or investment advice. Always consult with a qualified professional before making any financial or property-related decisions. We disclaim any liability for any loss, damage, or inconvenience arising from the use or reliance on information provided herein.

TeemU Finance Pty Ltd ABN: 80666 681 689 ; Australian Credit Licence 389087.

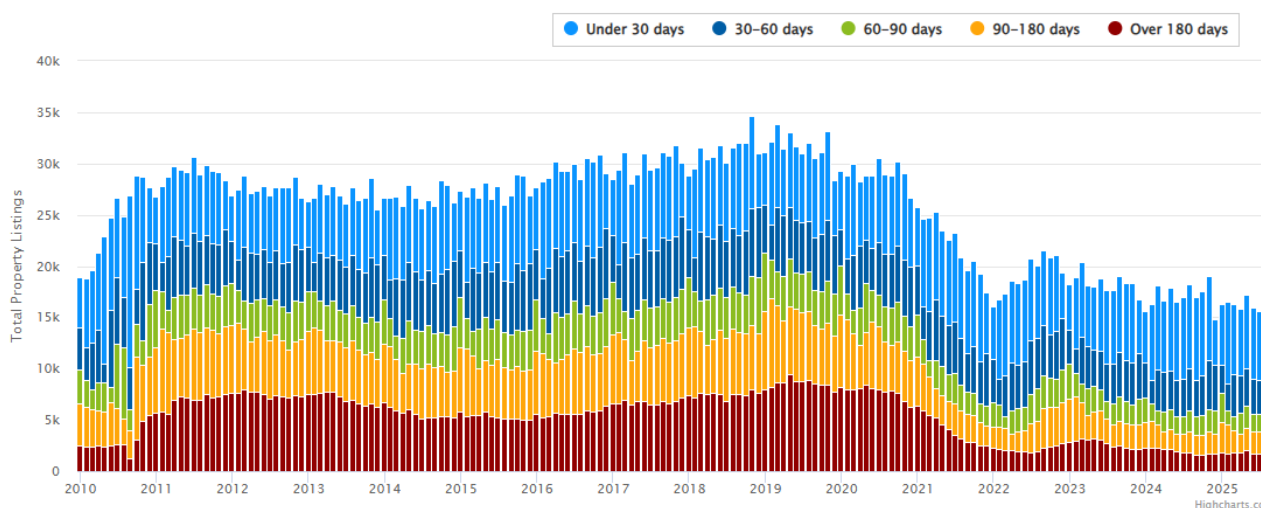
## Property Market Insight:

# TOTAL PROPERTY LISTINGS

**CITY: BRISBANE**

Total Property Listings

Source: SQM Research

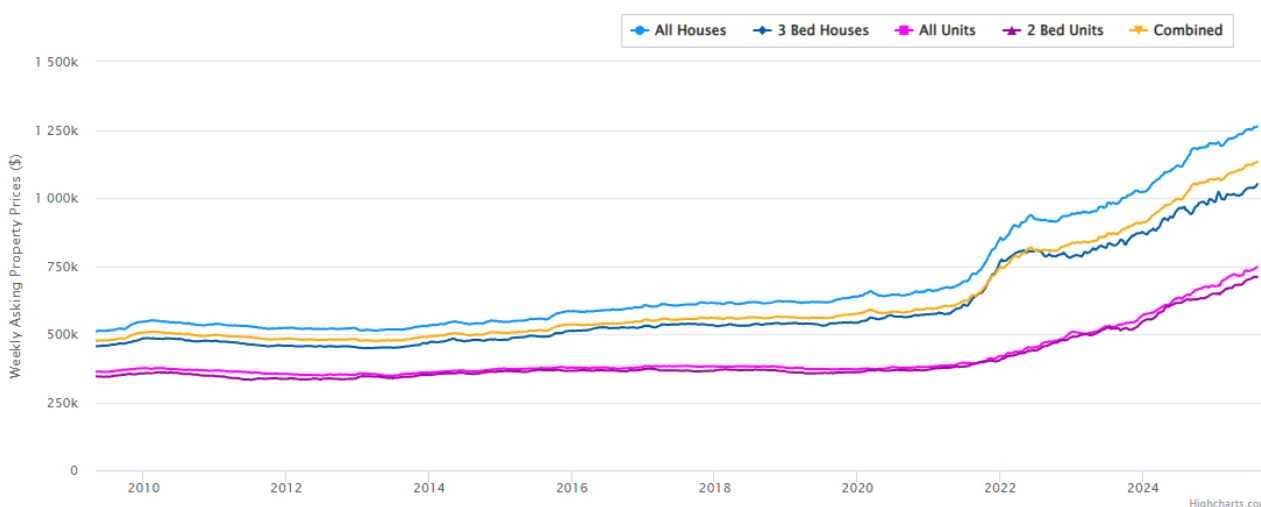


# WEEKLY ASKING PROPERTY PRICES

**CITY: BRISBANE**

Weekly Asking Property Prices

Source: SQM Research



**Sources:** apra; rba.gov.au; abs.gov.au; SQM Research, Core Logic

**Disclaimer:** The information provide herein is for informational purposes only. It is not intended as professional financial, legal, or investment advice. Always consult with a qualified professional before making any financial or property-related decisions. We disclaim any liability for any loss, damage, or inconvenience arising from the use or reliance on information provided herein.

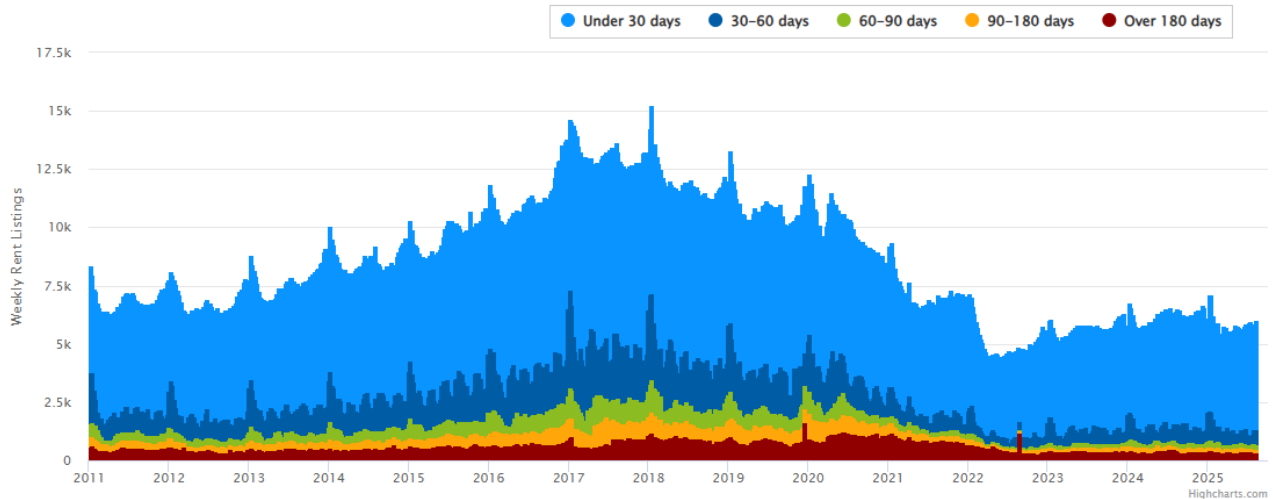
TeemU Finance Pty Ltd ABN: 80666 681 689 ; Australian Credit Licence 389087.

# WEEKLY RENT LISTINGS

**CITY: BRISBANE**

Weekly Rent Listings

Source: SQM Research

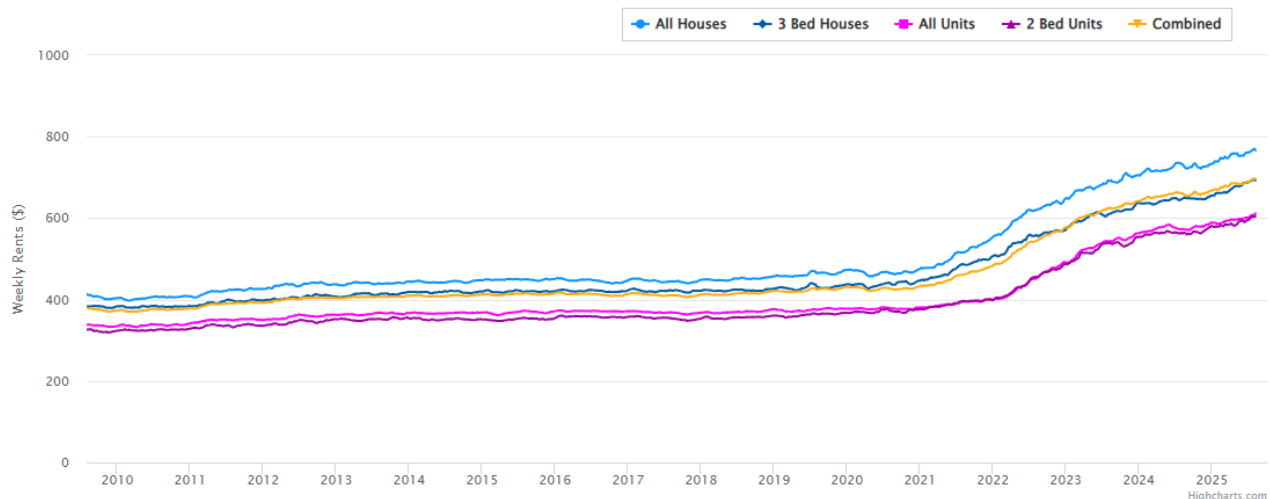


# WEEKLY RENTS

**CITY: BRISBANE**

Weekly Rents

Source: SQM Research



**Sources:** apra; rba.gov.au; abs.gov.au; SQM Research, Core Logic

**Disclaimer:** The information provide herein is for informational purposes only. It is not intended as professional financial, legal, or investment advice. Always consult with a qualified professional before making any financial or property-related decisions. We disclaim any liability for any loss, damage, or inconvenience arising from the use or reliance on information provided herein.

TeemU Finance Pty Ltd ABN: 80666 681 689 ; Australian Credit Licence 389087.